



HOUSE of REPRESENTATIVES

STATE OF MICHIGAN

Appropriations Requests for Legislatively Directed Spending Items

1. The sponsoring representative's first name:
Joseph
2. The sponsoring representative's last name:
Pavlov
3. The cosponsoring representatives' names. All cosponsors must be listed. If none, please type 'n/a.' A signed letter from the sponsor approving the co-sponsorship and a signed letter from the member wishing to co-sponsor are required. Attach letters at question #9 below.
n/a
4. Name of the entity that the spending item is intended for:
MI Student Perception Survey - Funding Recipient is Kent Intermediate School District
5. Physical address of the entity that the spending item is intended for:
2930 Knapp St. NE, Grand Rapids, MI 49525
6. If there is not a specific recipient, the intended location of the project or activity:
Currently serving 136 School Districts and 31 ISDs throughout Michigan and growing. Please see the attached document displaying all of the districts and areas serviced in MI.
7. Name of the representative and the district number where the legislatively directed spending item is located:
Numerous members throughout the state
8. Purpose of the legislatively directed spending item. Please include how it provides a public benefit and why it is an appropriate use of taxpayer funding. Please also demonstrate that the item does not violate Article IV, S 30 of the Michigan Constitution. MI Student Perception Survey has received funding through MI budget cycles within the School Aid budget, most recently in 2024 with an award of \$500,000. The MI Student Voice Perception Survey was developed by Michigan Superintendents in 2019 to address the need for a common measure to provide a more complete picture of student experience. Until the survey's creation, there was no uniform way to evaluate student engagement and the impact of related services and interventions for students beyond

standardized test scores.

The MI Student Voice initiative offers a suite of surveys designed to provide a more holistic view of the student experience, and includes the Student Perception Survey, Educator Perception Survey and Parent/Guardian Perception Survey. Collectively, these tools allow for a deeper understanding of the school environment from multiple perspectives. The Survey now plays a transformative role in how education leaders approach district and school improvement planning by prioritizing the voice of students.

This data allows school districts to assess where students are at now and use it to inform district and school improvement plans, professional development, interventions, classroom improvements and more. The survey is intended to be a complement to existing tests, helping to provide a more holistic view of students and their education. Including recent additions of surveys administered to parents and educators.

Article IV, Section 30 requires a 2/3 vote for any appropriation for a local purpose. As for the research, implementation, outcomes and educational benefit of having the MI Student Perception Survey in 136 Districts (and growing) throughout the State of MI, it benefits all taxpayers and therefore should not be subject to the increased vote count for passage.

9. **Attach documents here if needed:**

Attachments added to the end of this file.

10. **The amount of state funding requested for the legislatively directed spending item.**

500000

11. **Has the legislatively directed spending item previously received any of the following types of funding? Check all that apply.**

["State","Private"]

12. **Please select one of the following groups that describes the entity requesting the legislatively directed spending item:**

Local unit government

13. **For a non-profit organization, has the organization been operating within Michigan for the preceding 36 months?**

Not applicable

14. **For a non-profit organization, has the entity had a physical office within Michigan for the preceding 12 months?**

Not applicable

15. **For a non-profit organization, does the organization have a board of directors?**

Not applicable

16. For a non-profit organization, list all the active members on the organization's board of directors and any other officers. If this question is not applicable, please type 'n/a.'

n/a

17. "I certify that neither the sponsoring representative nor the sponsoring representative's staff or immediate family has a direct or indirect pecuniary interest in the legislatively directed spending item."

Yes, this is correct

18. Anticipated start and end dates for the legislatively directed spending item:

Anticipated start date is Q1 of 2026, anticipated completion of funds is Q4 of 2026

19. "I hereby certify that all information provided in this request is true and accurate."

Yes



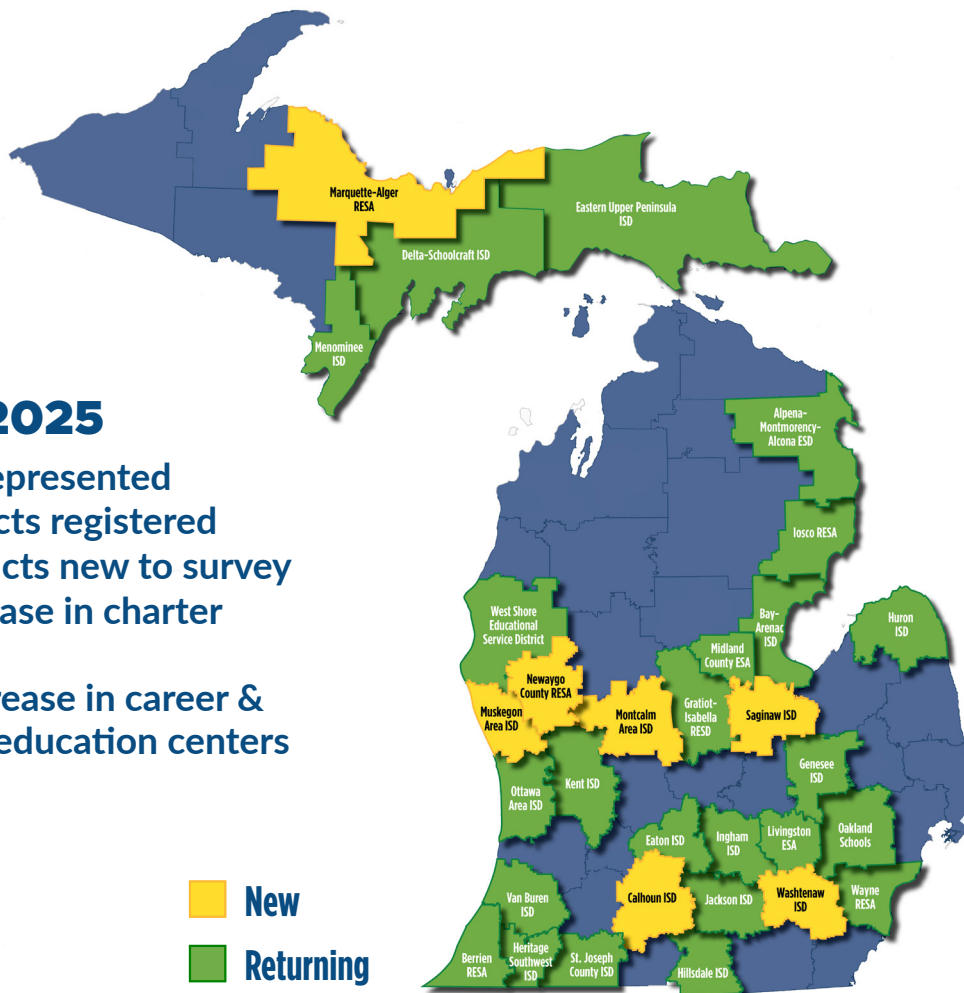
2025: Participation On The Rise

Participation in the MI Student Voice Perception Survey has grown significantly year over year, and the survey is playing an increasingly vital role in how education leaders in Michigan prioritize student voices in shaping district and school improvement plans. To date, 136 districts are registered to administer the survey in Spring 2025. Of these 136 districts, 35% are NEW to the survey.

Spring 2025

- 31 ISDs represented
- 136 districts registered
- 35% districts new to survey
- 28% increase in charter schools
- 125% increase in career & technical education centers

 **New**
 **Returning**



Suite of Surveys

The MI Student Voice initiative now offers a suite of surveys designed to provide a more holistic view of the student experience:

- Student Perception Survey
- Educator Perception Survey
- Parent/Guardian Perception Survey

Collectively, these tools allow for a deeper understanding of the school environment from multiple perspectives.

Spring 2025 Survey Administration Windows



Window 1: February 17 - March 7

Window 2: March 10 - March 28

Window 3: March 31 - April 18

Window 4: April 21 - May 9



“If you want a successful culture, a successful environment and a successful school district with successful test scores and successful involvement and engagement, then you need to sit down with your student and you need to hear them. Because nobody knows what it feels like to be a student other than students.”

Malea Van Kampen, Cedar Springs High School



In November 2024, educators and legislators convened in Lansing, Michigan, for an insightful session focused on student well-being and mental health. A panel of students shared their perspective and emphasized the importance of involving students to create a sense of connection in schools.

Additionally, two school administrators showcased how they are using the data from the MI Student Voice Perception Survey to guide and enhance school quality and support systems within their districts.



“The more scholars feel they belong, the more invested they become in meeting the expectations of the classroom community.”

*Kenyatta Hill-Hall, Principal,
Grand Rapids University Preparatory Academy*

“I’m grateful to have this data at my disposal to inform my community of the very real work we have to do with our students and staff... keeping the mental health of our students at the core of everything we do.”

*Dr. Katherine Bertolini, Superintendent,
Maple Valley Schools*



What’s Next

We will be developing a series of informational videos with a focus on making the survey data actionable. The videos will highlight a handful of districts representing varying locations and demographics and the efforts they have undertaken to utilize their data. The intent is for these videos to serve as valuable reference tool for other participating districts, as well as encouragement for those who have yet to participate.

With your continued support, we can ensure the ongoing growth and improvement of the survey. This will enable us to better serve students and schools throughout Michigan, creating lasting benefits for education across the state.



What is it?

The MI Student Voice Perception Survey was developed by Michigan Superintendents in 2019 to address the need for a common measure to provide a more complete picture of student experience. Participation has grown significantly, and the survey is now playing a transformative role in how education leaders across the state approach district and school improvement planning. In Spring 2024, 108 districts administered the survey, representing over 70,000 student voices. This Spring, 136 districts are registered to participate.

Today, MI Student Voice is a suite of surveys designed to provide a holistic picture of the student experience, which includes Student, Educator and Parent/Guardian Perception Surveys.

Designed for students in grades 5-12. Covers 3 critical domains: Student Engagement, Belonging, Social-Emotional Learning.

Why does it matter?

- **Student Engagement:** Engaged students are 2.5x more likely to say that they do well in school and 4.5x more likely to be hopeful about the future.¹
- **Belonging:** We must equip our students to thrive in an increasingly diverse world, ensuring that every child feels a sense of belonging.
- **Social-Emotional Learning:** Cultivates characteristics, values and mindsets that students need for future success.

Why a statewide consortium?

- Despite it being a precondition for academic mastery, no common measure of student perception currently exists in our state.
- In order to influence policy and to demonstrate need, it's requisite that there is a uniform measure of student voice.
- Survey data opens the door for a reexamination of school quality – beyond the limited picture of test scores.

1. Jackson, C.K. et al. *Linking social-emotional learning to long-term success*. Education Next.

**Learn more,
sign up!**



Survey Key Points

- ✓ Around 10 minutes to complete
- ✓ Less than 40 questions
- ✓ Flexible
- ✓ Validated and proven
- ✓ Customized marketing materials
- ✓ Implementation support
- ✓ Free

Straight from the Students



Student Engagement

"A school's ability to listen to students creates a system that not only empowers the school, but the students around it. And this starts with there being administrators and teachers and faculty members that are willing to listen to the students and making sure that they feel heard."

Kerim Suleman, East Kentwood High School

Belonging

"A lot of students – the reason they're struggling or not doing as well in classes is because they don't feel the need to be there, because they don't feel cared about or wanted. Sometimes, just knowing that the teachers are there for you – the staff is there for you to help you become a better version of yourself – it really helps you just want to learn as much as they want you to learn."

Sutherland Philips, Buchanan High School



Social-Emotional Learning

"When you have that voice and when you see things that you've said being implemented in the school, you have that connection and it just makes you feel at home almost and able to learn rather than being a number in the system."

Elijah Brook, Eaton Rapids High School

www.MIStudentVoice.org

Learn more, sign up!

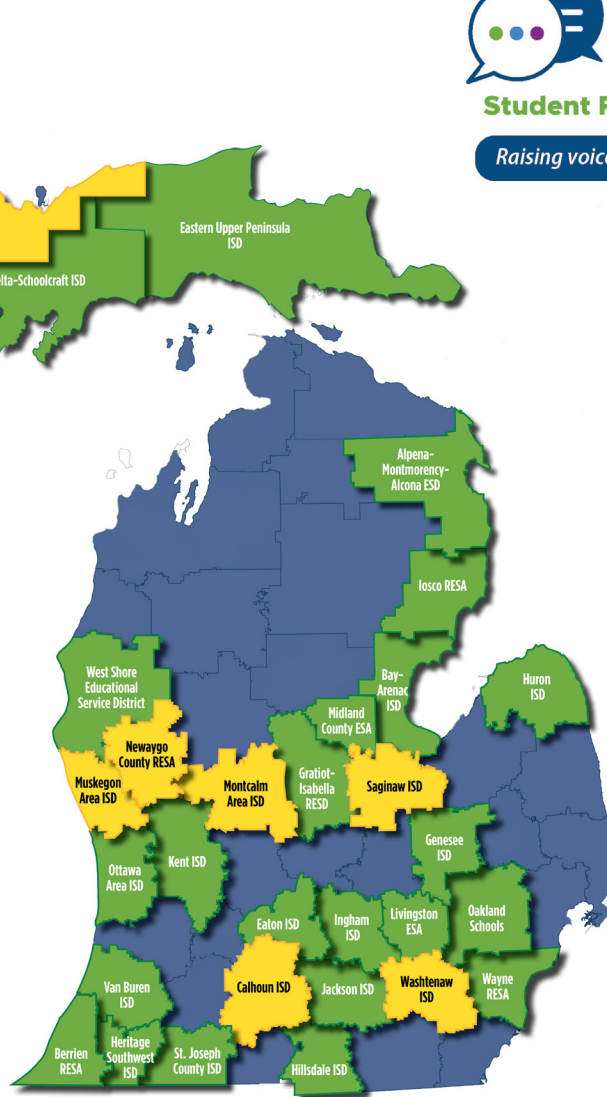




Spring 2025

- 31 ISDs represented
- 136 districts registered
- 35% districts new to survey
- 28% increase in charter schools
- 125% increase in career & technical education centers

 **New**
 **Returning**



Survey Timeline

2019

Survey Creation

Superintendents across Kent ISD gathered to create Student survey.

2021

Pilot Testing

Student survey pilot tested with **13** Kent ISD schools.

2022

Year 1

Student survey launched with **22 districts** across the state participating.

2023

Year 2

Student survey modified with **58 districts** across the state participating.

2024

Year 3

108 districts participated in Student survey. Educator and Parent/Guardian surveys officially launched.

2025

Year 4

136 districts registered - **26% increase YoY**. Educator and Parent/Guardian surveys officially launched.



Districts Registered to Participate Spring 2025

Alpena-Montmorency-Alcona ESD

Atlanta Community Schools
Hillman Community Schools

Bay-Arenac ISD

Au Gres-Sims School District
Bangor Township Schools
Bay-Arenac Community High School
Essexville-Hampton Public Schools
Pinconning Area Schools
Standish Sterling Community Schools

Berrien RESA

Brandywine Community Schools
Buchanan Community Schools
Coloma Community Schools
Countryside Academy
Eau Claire Public Schools
Hager Township S/D #6
Niles Community Schools
Watervliet School District

Calhoun ISD

Battle Creek Public Schools

Delta-Schoolcraft ISD

Bark River-Harris School District
Big Bay De Noc School District
Delta-Schoolcraft Area Center
Delta-Schoolcraft ISD
Escanaba Area Public Schools
Gladstone Area Schools
Manistique Area Schools
Rapid River Public Schools

Eastern Upper Peninsula ISD

De Tour Area Schools
De Tour Arts and Technology Academy
Engadine Consolidated Schools
Sault Ste. Marie Area Schools

Eaton RESA

Charlotte Public Schools
Eaton Rapids Public Schools
Grand Ledge Public Schools
Maple Valley School District

Genesee ISD

Atherton Community Schools
Bentley Community School District
Davison Community Schools
Flint Cultural Center Academy
Flushing Community Schools
Genesee School District
Genesee Intermediate School District
Goodrich Area Schools
Grand Blanc Community Schools
International Academy of Flint
Kearsley Community School District
Lake Fenton Community Schools
Mt. Morris Consolidated Schools
Richfield Public School Academy
WAY Academy - Flint
Westwood Heights Community Schools
Woodland Park Academy

Gratiot-Isabella RESD

Alma Public Schools
Beal City Public Schools
Breckenridge Community Schools
Fulton Schools
Mt. Pleasant City School District
Renaissance Public School Academy
Shepherd Public Schools
St. Louis Public Schools

Heritage Southwest Intermediate School District

Cassopolis Public Schools

Hillsdale ISD

Reading Community Schools

Huron ISD

Huron Area Technical Center
Huron ISD
North Huron School District

Ingham ISD

East Lansing School District
Haslett Public Schools
Mason Public Schools
Stockbridge Community Schools
Waverly Community Schools

Iosco RESA

Hale Area Schools
Tawas Area Schools
Whittemore-Prescott Area Schools

Jackson ISD

Da Vinci Institute

Kent ISD

Caledonia Community Schools
Comstock Park Public Schools
Creative Technologies Academy
Godwin Heights Public Schools
Grand Rapids Public Schools
Grandville Public Schools
Kelloggsville Public Schools
Kenowa Hills Public Schools
Kent Career Tech Center
Kent City Community Schools
Kentwood Public Schools
Lowell Area Schools
Northview Public Schools
Rockford Public Schools
Sparta Area Schools

Thornapple Kellogg Schools

West Michigan Aviation Academy
Wyoming Public Schools

Livingston ESA

Hartland Consolidated School District
Howell Public Schools

Marquette-Alger RESA

Gwinn Aea Community Schools
North Star Montessori Academy

Menominee ISD

Carney-Nadeau Public School
Menominee Area Public Schools
North Central Area Schools
Stephenson Area Public Schools

Midland County Educational Service Agency

Midland Public Schools

Montcalm Area ISD

Montabella Community Schools
Montcalm Area ISD

Muskegon Area ISD

Muskegon Area Career Tech Center

Newaygo County RESA

Grant Public School District
Newaygo County Career Tech Center

Oakland Schools

Avondale School District
Clarenceville School District
Lake Orion Community Schools
Royal Oak Schools
School District of the City of Hazel Park
Southfield Public School District

Ottawa Area ISD

Hudsonville Public School District
Saugatuck Public Schools

Saginaw ISD

Birch Run Area Schools
Saginaw Township Community Schools
Swan Valley School District

St. Joseph County ISD

Burr Oak Community School District

Van Buren ISD

Bangor Public Schools
Decatur Public Schools

Wayne RESA

Advanced Technology Academy
Allen Park Public Schools
Creative Montessori Academy
Dearborn Heights School District No. 7
Garden City Public Schools
George Washington Carver Academy
Grosse Ile Township Schools
Redford Union Schools, District No. 1
Romulus Community Schools
South Redford School District
Summit Academy North
Taylor School District
The James and Grace Lee Boggs School
School District of the City of Wyandotte

West Shore Educational Service District

Mason County Central Schools
Shelby Public Schools
Walkerville Public Schools
West Shore Educational Service District - CTE